

# Study Arms

**Study Arm:** a group of participants who receive a specific treatment or no treatment, as defined by the study's protocol

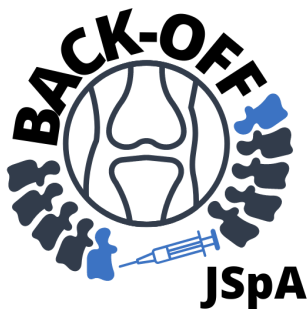
**Can I pick the arm I want to be in?**

 **NO** 

NO is the short answer. Each arm is really important and randomly assigning patients into study arms is a big part of making sure the study is relevant and approved in the medical field.



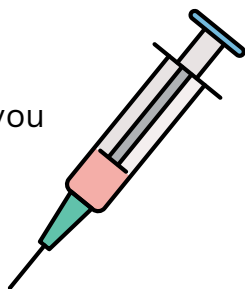
Scan the QR code to visit the study website



# Study Arms

## **Study Arm 1: Continue Medication Plan**

Nothing changes for you BUT you are now part of an important study AND you will get compensated for your time.



## **Study Arm 2: Taper or Take Less Medication**

You will take your medication less often or at a lower dose to see if it changes your disease activity. You will be compensated for your time.



## **Study Arm 3: Stop Medication**

You will stop taking your TNFi medications completely to see if it changes your disease activity. You will be compensated for your time.

